



# CALL FOR PARTICIPANTS!

Join the Autism Spectrum Program of Excellence (ASPE) at The University of Pennsylvania in better understanding the biological processes of autism to inform support programs, increase acceptance and advocacy, and improve the quality of life for autistic individuals.

## Participation Includes...

- Completing a series of online questionnaires
- Returning a free saliva kit for DNA analysis
- Option to wear a research-grade (Fitbit-like) device to track activity and sleep
- All completed in the comfort of your own home!

**ASPE is recruiting individuals with an autism diagnosis and/or NRXN1 deletion, their family members, and any person without an autism diagnosis in the community.**



**Scan to join ASPE today!**

VISIT OUR WEBSITE AT [WWW.ASPE.MED.UPENN.EDU](http://WWW.ASPE.MED.UPENN.EDU)

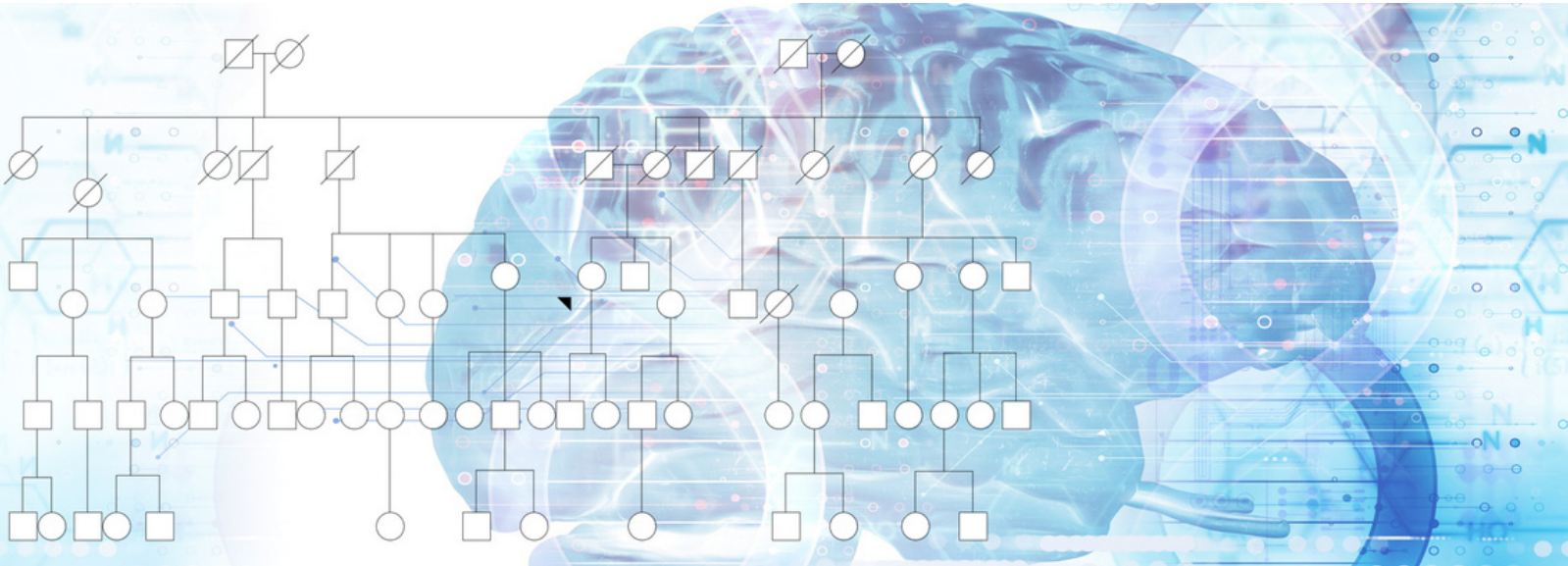
 [ASPE@PENNMEDICINE.UPENN.EDU](mailto:ASPE@PENNMEDICINE.UPENN.EDU)

# CALL FOR



**Penn ASPE**  
Autism Spectrum Program of Excellence

# PARTICIPANTS!



Join the Autism Spectrum Program of Excellence at The University of Pennsylvania in better understanding the biological processes of autism to inform support programs, increase awareness and advocacy, and improve the quality of life for autistic individuals.

## Participation Includes...

- Completing a series of online questionnaires
- Being sent a free saliva kit to complete and send back to us
- Optional wearing of an activity/sleep tracking watch (actigraph)
- All completed in the comfort of your own home!

**ASPE is open to individuals with an autism diagnosis, their family members, and unrelated community members.**



**Scan to see if you qualify today!**

VISIT OUR WEBSITE AT [WWW.ASPE.MED.UPENN.EDU](http://WWW.ASPE.MED.UPENN.EDU)